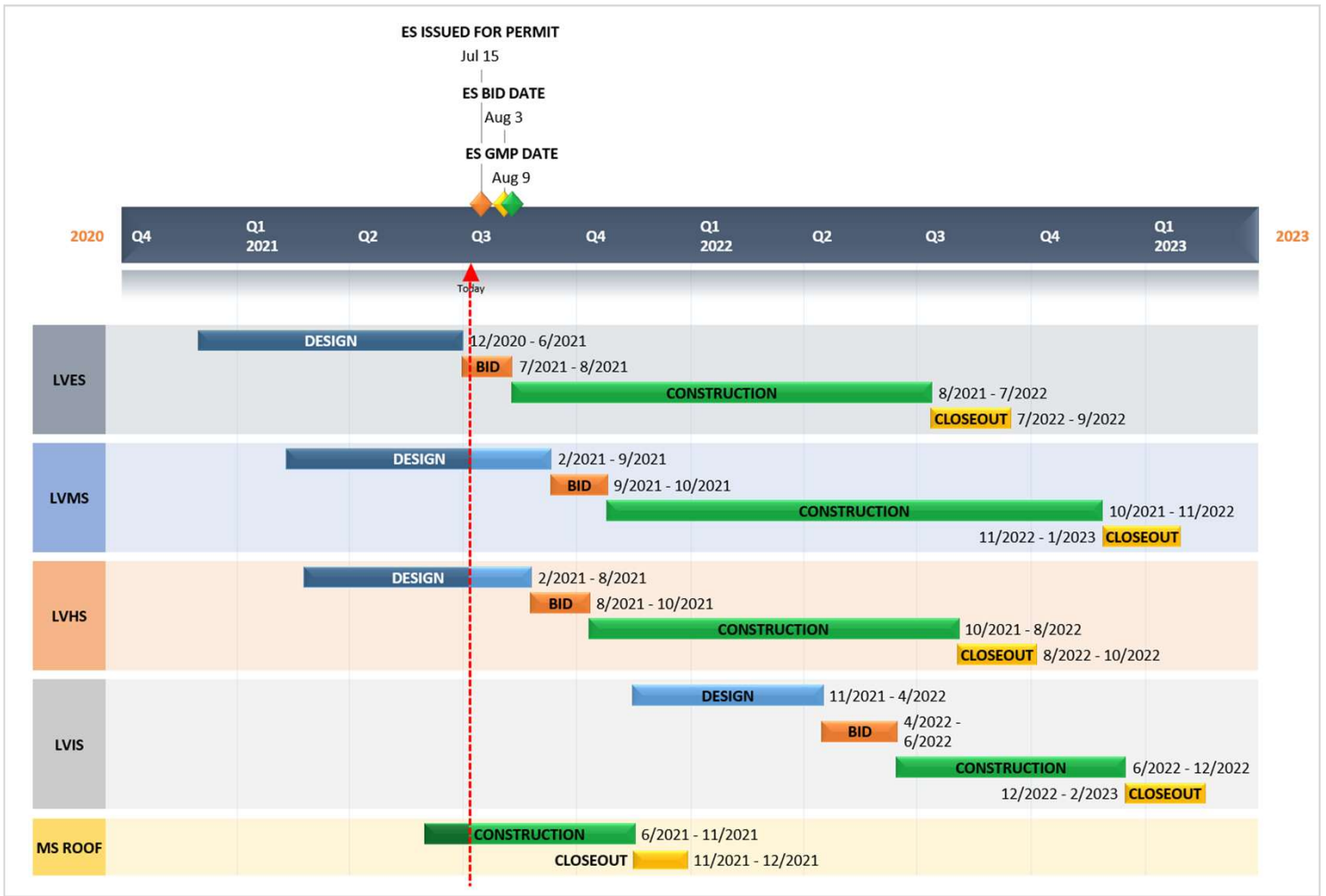




### MASTER SCHEDULE



### REVENUES AND EXPENDITURES

Project	Budget	Committed	Expenditures	Unencumbered
Elementary School	\$17,489,276	\$1,533,853	\$731,982	\$15,955,423
Middle School	\$7,726,618	\$722,104	\$206,683	\$7,004,514
MS Roof	\$2,748,613	\$1,895,727	\$243,354	\$852,886
High School	\$10,943,536	\$1,023,261	\$281,799	\$9,920,275
Intermediate School	\$4,183,909	\$73,909	\$11,192	\$4,110,000
Land Acquisition	\$1,238,048	\$0.00	\$0.00	\$1,238,048
<b>Totals</b>	<b>\$44,330,000</b>	<b>\$5,248,854</b>	<b>\$1,475,010</b>	<b>\$37,843,098</b>



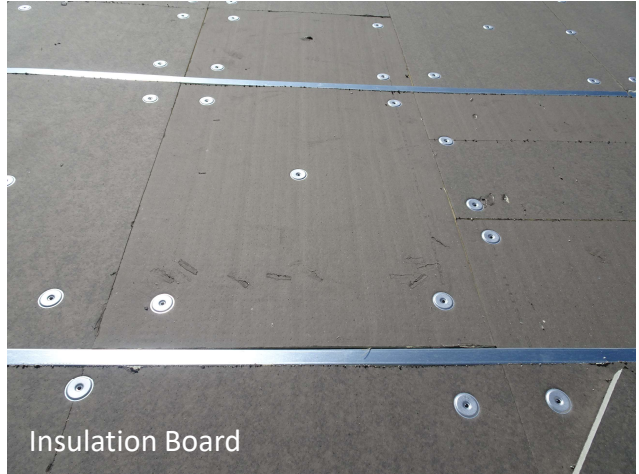


MIDDLE SCHOOL ROOF REPLACEMENT

40% Complete



Underlayment



Insulation Board



Metal Purlin



Standing Seam Metal Panels



View from Sidewalk